

The **Ignite**® Family of Linear Electric Fireplaces



Experience Better Living.

Ignite
Family



Ignite Family
Absolute comfort and design flexibility.

Featuring **Optiflame** technology.

Available in
50, 60, 74
& 100 inch
widths



IGNITE evolve



Key Benefits



Comfort & Aesthetic

Stunning flames, ember bed and lifelike driftwood work together to create an authentic fire experience.



Energy Efficiency

Patented Comfort\$aver® technology reduces energy usage while keeping the room temperature stable and cozy.



Complete Personalization

Endless personalization of the flame speed, color and ember bed to make this fireplace unique to you.



Multi-Fire® Flame Effect

Patented Dimplex flame effect produces vivid, realistic flames that ignite the senses.



Comfort\$aver Heating

On-demand supplemental heating for up to 1,000 sq. ft. with the option to turn the heat off and enjoy flames year-round.



Seamless Installation

Fully recesses into a 2x6 wall with or without trim for an edgeless design.



Smart Self-Diagnostics

Have peace of mind with the self-diagnosing module that makes fixing issues simple, backed by a 5-year warranty.

Edgeless design, less frame, more flame

5 flame speeds

Comfort\$aver® heating system

Multi-Fire® flame effect

Ambient light sensor

Smart self-diagnostics

Hidden Touch controls



Large and medium acrylic crystals, tumbled glass embers and driftwood

Mirrored glass backer to enhance flame effect

11-3/4 (29.7 cm) viewing height

Featuring **Optiflame** technology.

The most popular electric flame technology, developed by Dimplex to create a cozy and safe fire effect.



Tumbled glass



Lifelike driftwood



Acrylic crystals



Total Control

For ultimate control of your fireplace, use the Dimplex Flame Connect App. You can also use the included remote control or hidden control panel.

Available
in 50, 60,
74, 88 &
100 inch
widths





Key Benefits



A Bold Statement

Incredible depth, unparalleled flames and an increased viewing height create a focal piece in your space.



Energy Efficiency

Patented Comfort\$aver® technology reduces energy usage while keeping the room temperature stable and cozy.



Design Versatility

Install the fireplace your way to fit your space. Front-facing, right or left corner and bay, all in one box.

Customize fireplace with media accent color and top light

Adjustable brightness

Air circulation mode

Comfort\$aver® heating system

Multi-Fire® flame effect

Smart self-diagnostics

Hidden Touch controls



Small and large acrylic crystals with natural-looking driftwood

Mirrored glass backer to enhance flame effect

16-1/8 (40.9 cm) viewing height



Multi-Fire® Flame Effect

Patented Dimplex flame effect produces vivid, realistic flames that ignite the senses.



Comfort\$aver Heating

On-demand supplemental heating for up to 1,000 sq. ft. with the option to turn the heat off and enjoy flames year-round.



Enhanced Personalization

Experience your fireplace, your way with endless options of flame and ember bed colors and custom flame speeds.



Smart Self-Diagnostics

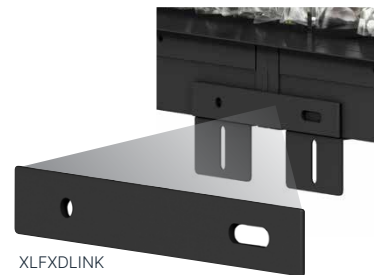
Have peace of mind with the self-diagnosing module that makes fixing issues simple, backed by a 5-year warranty.

Featuring **Optiflame** technology.

The most popular electric flame technology, developed by Dimplex to create a cozy and safe fire effect.



To get a dramatically oversized fireplace that makes a lasting impression, use the linking kit and combine multiple units in a series to achieve your desired length.



XLFXDLINK



Total Control

For ultimate control of your fireplace, use the Dimplex Flame Connect App. You can also use the included remote control or hidden control panel.

Available in
50, 60, 74
& 100 inch
widths



Key Benefits



Classic Charm

Flickering flames and acrylic crystals create a stunning feature while providing ambiance to any room.



Energy Efficiency

Enjoy perfect comfort with the exclusive Comfort\$aver® technology, reducing energy usage while keeping the room temperate stable.



Simple Comfort

Instantly transform your space into a cozy retreat with simple controls and zero hassles.



Multi-Fire® Flame Effect

Patented Dimplex flame effect produces vivid, realistic flames that ignite the senses.



Comfort\$aver Heating

On-demand supplemental heating for up to 1,000 sq. ft. with the option to turn the heat off and enjoy flames year-round.



Seamless Installation

Fully recess into a 2x6 wall with or without trim for an edgeless design.



Worry-Free Operation

With little to no maintenance and backed by a 5-year warranty, all you have to do is enjoy.

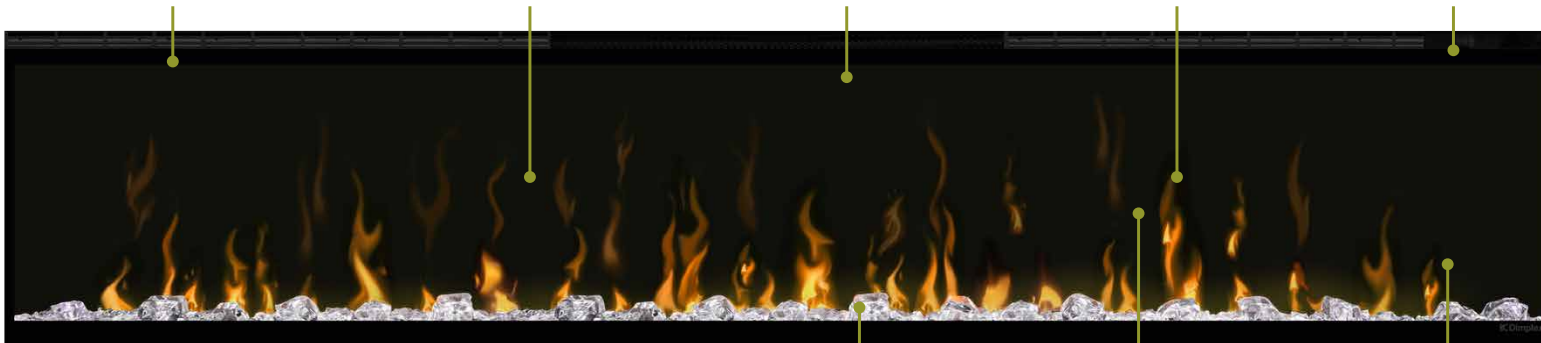
Edgeless design, less frame, more flame

Adjustable brightness

Comfort\$aver® heating system

Multi-Fire® flame effect

Hidden Touch controls



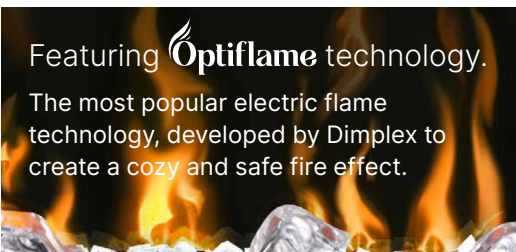
Large and medium acrylic crystals

Mirrored glass backer to enhance flame effect

11-3/4 (29.7 cm) viewing height

Featuring **Optiflame** technology.

The most popular electric flame technology, developed by Dimplex to create a cozy and safe fire effect.



Driftwood and River Rock Ember Bed Kit



Ignite XL Trim Kit



Easy Control

Use the included remote or hidden touch controls to easily operate your fireplace.

Ignite Fireplace Comparison



Firebox Series	Ignite Bold Series	Ignite Evolve Series	Ignite XL® Series
Size	50", 60", 74", 88", 100"	50", 60", 74", 100"	50", 60", 74", 100"
Ember Bed	Lifelike Driftwood with Acrylic Crystals	Tumbled Glass, Lifelike Driftwood, Acrylic Crystals	Acrylic Crystals
Ember Bed Themes Brightness	8 Themes Adjustable Brightness	8 Themes Adjustable Brightness	8 Themes Adjustable Brightness
Flame Color Themes Brightness	7 Themes Adjustable Brightness	7 Themes Adjustable Brightness	1 Theme
Top Light	•		
Flame Technology	Optiflame	Optiflame	Optiflame
Flame Effect	Multi-Fire®	Multi-Fire®	Multi-Fire®
Flame Speed	5	5	
Flame Only Mode	•	•	•
Heater Only Mode	•	•	•
Air Circulation	•	•	
Heat Operation	Comfort\$aver® Heating		
Heating Range	1000 sq. ft.	1000 sq. ft.	1000 sq. ft.
Heat Disable	Onboard controls or Hardware disconnect	Onboard controls or Hardware disconnect	Onboard controls or Hardware disconnect
Built-in Thermostat	•	•	•
Wiring Type	Direct wire (120V Plug Kit Sold Separately)	Direct wire (Optional 120V Plug Kit Included)	Direct wire (Optional 120V Plug Kit Included)
Volts	120 240	120 240	120 240
Watts	1500 2500	1500 2500	1500 2500
BTU	5118 8530	5118 8530	5118 8530
Operating Controls	Hidden touch controls Remote	Hidden touch controls Remote	Hidden touch controls Remote
Flame Connect App	•	•	
Self Diagnostics	•	•	
Display	•	•	•
Timer	•	•	•
Installation Options	Fully recessed-front, right/left corner and bay. Linking Kit - to connect multiple units	Fully recessed-2×6, Partially recessed-2×4 with trim-kit accessory	Fully recessed-2×6, Partially recessed-2×4 with trim-kit accessory
Optional Accessories	Modular Linking Kit, Plug Kit	Trim Kit	Driftwood & River Rock Kit, Trim Kit
Warranty	5-year parts and service	5-year parts and service	5-year parts and service
Dimensions (WxHxD)	(based on Bay install) XLF5017-XD 50-1/2 × 23-7/8 × 12-1/8 in 128.4 × 60.7 × 30.6 cm XLF6017-XD 63-1/8 × 23-7/8 × 12-1/8 in 160.3 × 60.7 × 30.6 cm XLF7417-XD 75-5/8 × 23-7/8 × 12-1/8 in 192.1 × 60.7 × 30.6 cm XLF8817-XD 88-1/4 × 23-7/8 × 12-1/8 in 224.2 × 60.7 × 30.6 cm XLF10017-XD 100-3/4 × 23-7/8 × 12-1/8 in 255.9 × 60.7 × 31.1 cm	(with Trim) EVO50 (500002573) 51-1/2 × 16-1/2 × 5-3/4 in 130.6 × 41.9 × 14.6 cm EVO60 (500002574) 61-1/4 × 16-1/2 × 5-3/4 in 155.5 × 41.9 × 14.6 cm EVO74 (500002608) 75-1/2 × 16-1/2 × 5-3/4 in 191.6 × 41.9 × 14.9 cm EVO100 (500002563) 101-1/2 × 16-1/2 × 5-3/4 in 257.6 × 41.9 × 14.6 cm	(with Trim) XLF50 51-1/2 × 16-1/2 × 5-3/4 in 130.6 × 41.9 × 14.6 cm XLF60 61-1/4 × 16-1/2 × 5-3/4 in 155.5 × 41.9 × 14.6 cm XLF74 75-1/2 × 16-1/2 × 5-3/4 in 191.6 × 41.9 × 14.9 cm XLF100 101-1/2 × 16-1/2 × 5-3/4 in 257.6 × 41.9 × 14.6 cm



Experience Better Living.

To view full series visit:

dimplex.com

1-800-668-6663



Scan for more information on dimensions, accessories, technical details.